

Office of HIV Planning

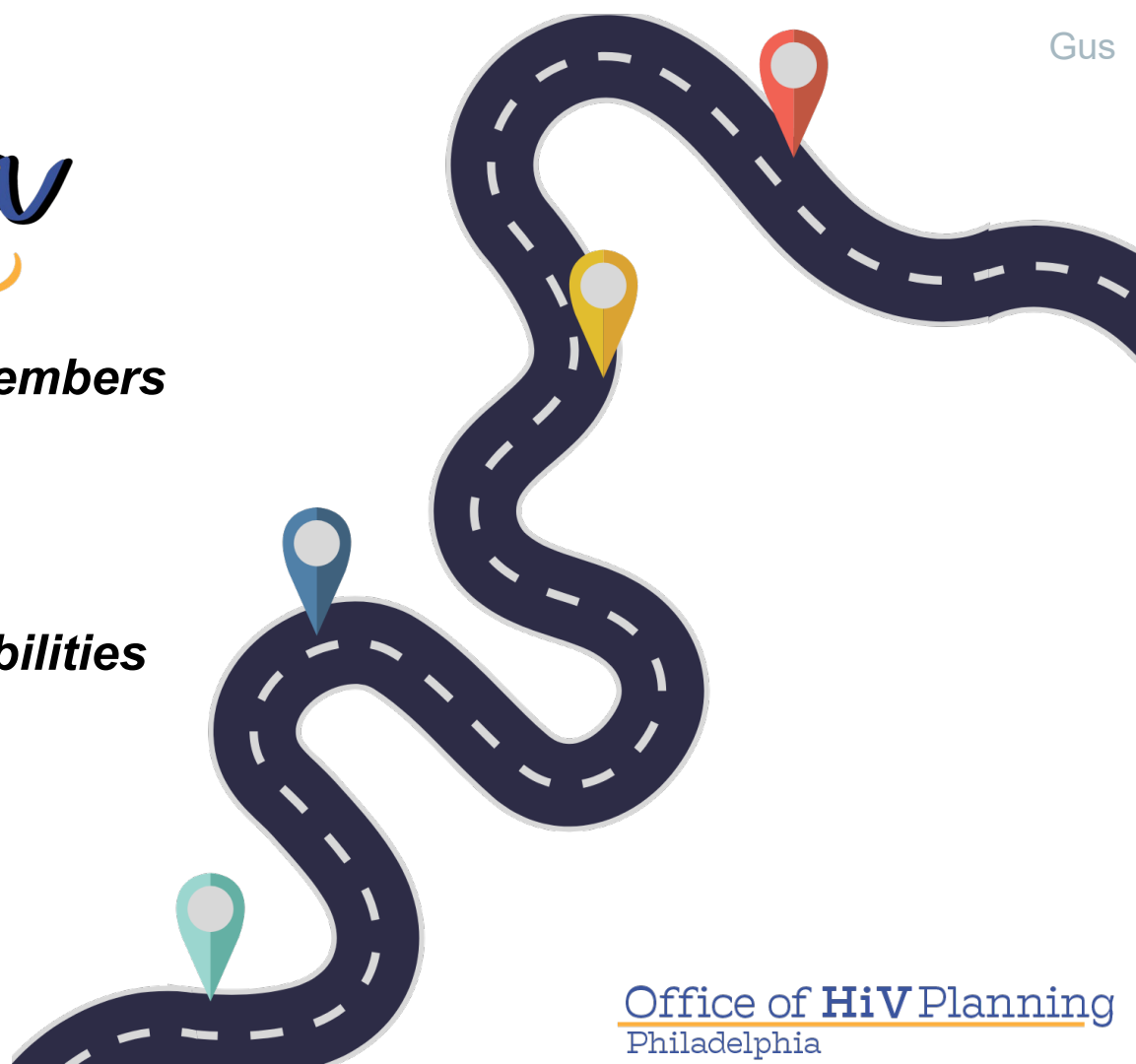
and the HIV Integrated Planning Council



Comprehensive Planning Committee (CPC)
- Every third Thursday of the month at 2:00 p.m. -

Agenda

- ***Meet Our Committee Members***
- ***Our Committee's Goals***
- ***CPC Roles & Responsibilities***
- ***Why YOU Should Join***
- ***How to Join***



Meet Some Committee Members!



**Gus Grannan,
Co-Chair**

*Representing
Philadelphia*



**Debra D'Alessandro,
Co-Chair**

*Representing
Philadelphia*



Keith Carter

Representing Philadelphia



Pam Gorman

Representing NJ Counties



Jerome Pipes

Representing NJ Counties

We have three goals that drive our work...



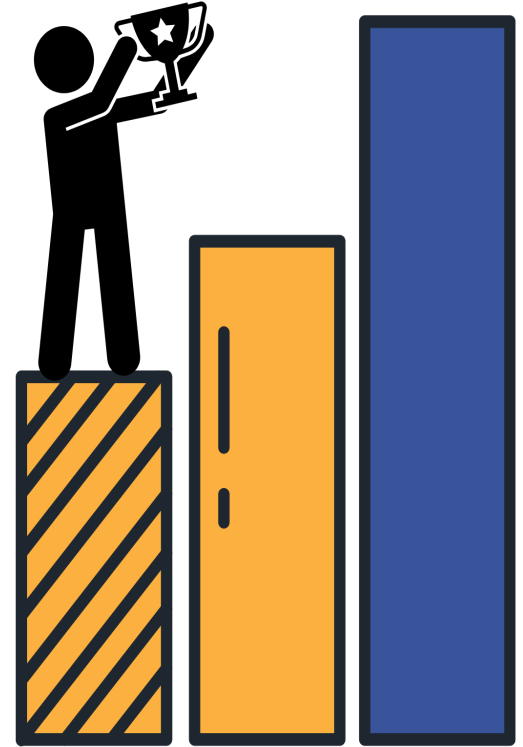
1. Develop actionable recommendations to support the council's plans, priority setting, and assigned activities.



2. Align the Ryan White (RW) program's long-term goals with data insights from epidemiological reports and other research.



3. Equip the council with well-documented needs and data analyses to assist processes like priority setting and resource allocation





ROLES &

RESPONSIBILITIES

What we do:



- ☑ Priority Setting
- ☑ Integrated Plan Work
- ☑ Consumer Survey
- ☑ Epi Data / Epi Infographics Work
- ☑ Data and Presentation Requests
- ☑ EHE Input
- ☑ Review of Local Service Standards



**WHY SHOULD
I JOIN CPC?**

HOW BEING IN CPC BENEFITS THE COMMUNITY:

- ★ **We provide diverse voices and perspectives to address community need...**
 - ❖ by ensuring our priority topics and discussions make their way into our decision-making during the allocations process
 - ❖ by working with data and reviewing plans, which gives us a unique, data-driven perspective that allows us to see how everything is connected

- ★ **We prioritize learning about and participating in community planning...**
 - ❖ by spearheading many planning activities such as: priority setting, the community survey, service standards, and more!

- ★ **We ensure responsiveness from our planning partners through presentations and discussions with providers and the Division of HIV Health (DHH)**

HOW CPC BENEFITS YOU & YOUR GROWTH WITHIN HIPC:

- ★ **CPC increases your knowledge of and collaboration with the full council**
 - ❖ CPC helps you understand what's going on and the behind the scenes of HIPC meetings
 - ❖ CPC helps decide what HIPC focuses on and its direction (& vice versa!)
 - ❖ HIPC often asks CPC to investigate “hot topics” and parking lot discussions

- ★ **CPC gives you a space to become more familiar with processes and the innerworkings of our care system**
 - ❖ See how programs are implemented and measured through DHH's reporting
 - ❖ Have more room to exercise and grow your personal expertise!

**OKAY, YOU
CONVINCED ME!
HOW CAN I GET
INVOLVED?**



Come to the Comprehensive Planning Committee!



Email Sofia Moletteri at sofia@hivphilly.org for committee questions



WHEN: The committee meets every third Thursday of the month from 2:00 – 4:00 p.m.

[CLICK HERE to add the recurring meeting link to your calendar!](#)

THANK YOU!

**WANT TO BE ADDED TO THE COMMITTEE EMAIL
LISTSERV? Email either...**

- kevin@hivphilly.org
- sofia@hivphilly.org